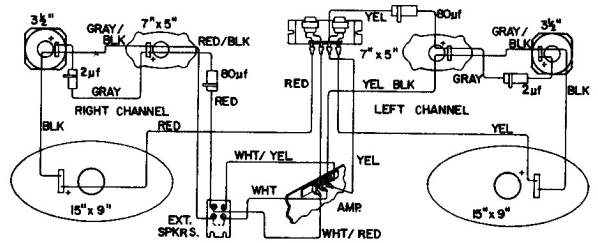
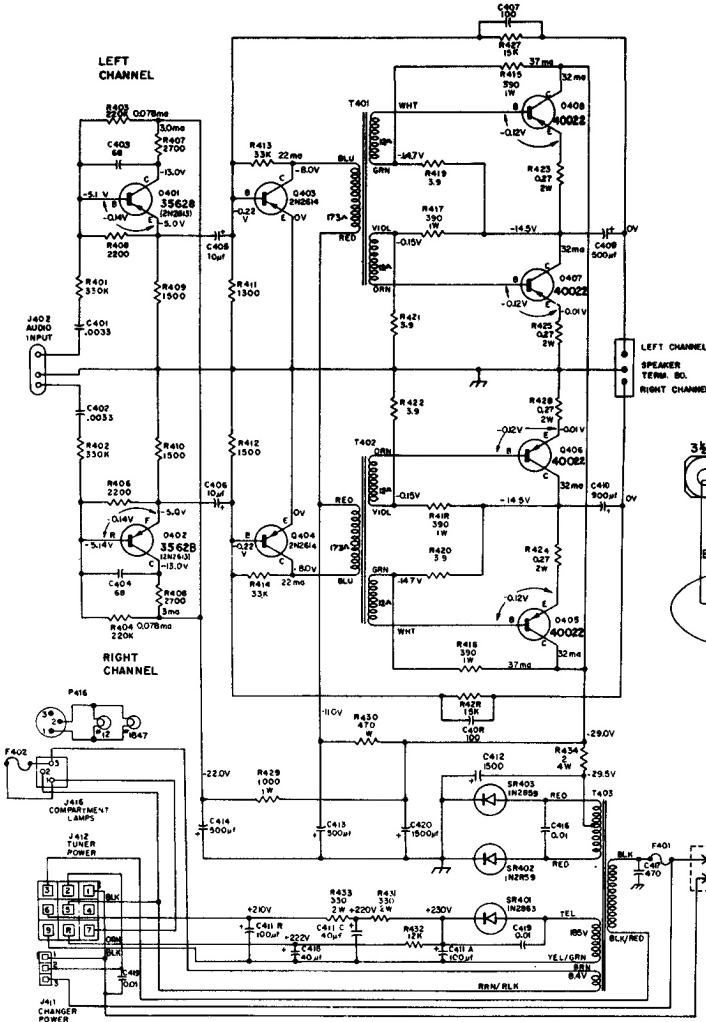
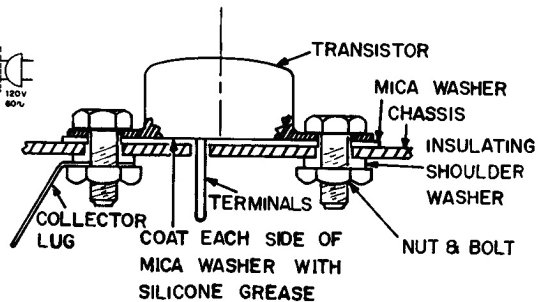


RCA VICTOR

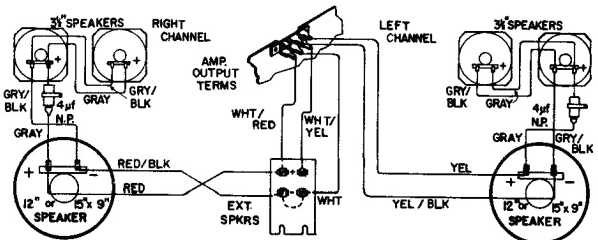
Models VFT 26W, VFT 27L, VFT 28M, VFT 29W, VFT 30W, and VFT 31L, employ Amplifier Chassis RS-212A covered on this page, and Tuner Chassis RC-1215M which is practically identical to RC-1215E chassis



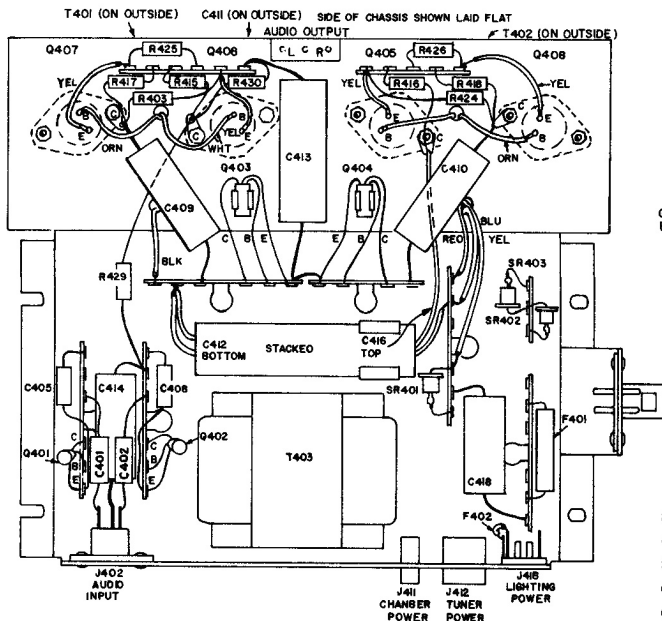
Speaker Wiring—VFT 26, 27, 28



Output Transistor Mounting

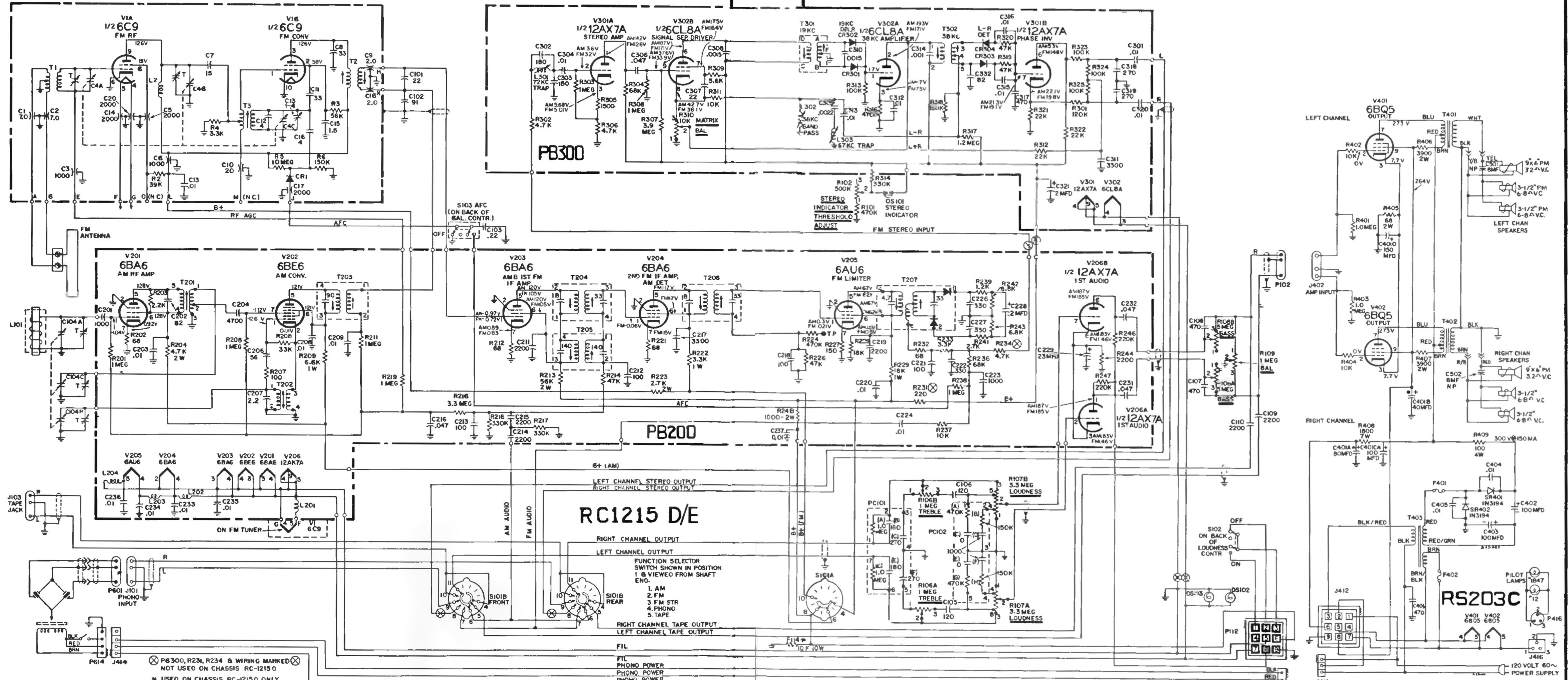


Speaker Wiring—VFT 29, 30, 31

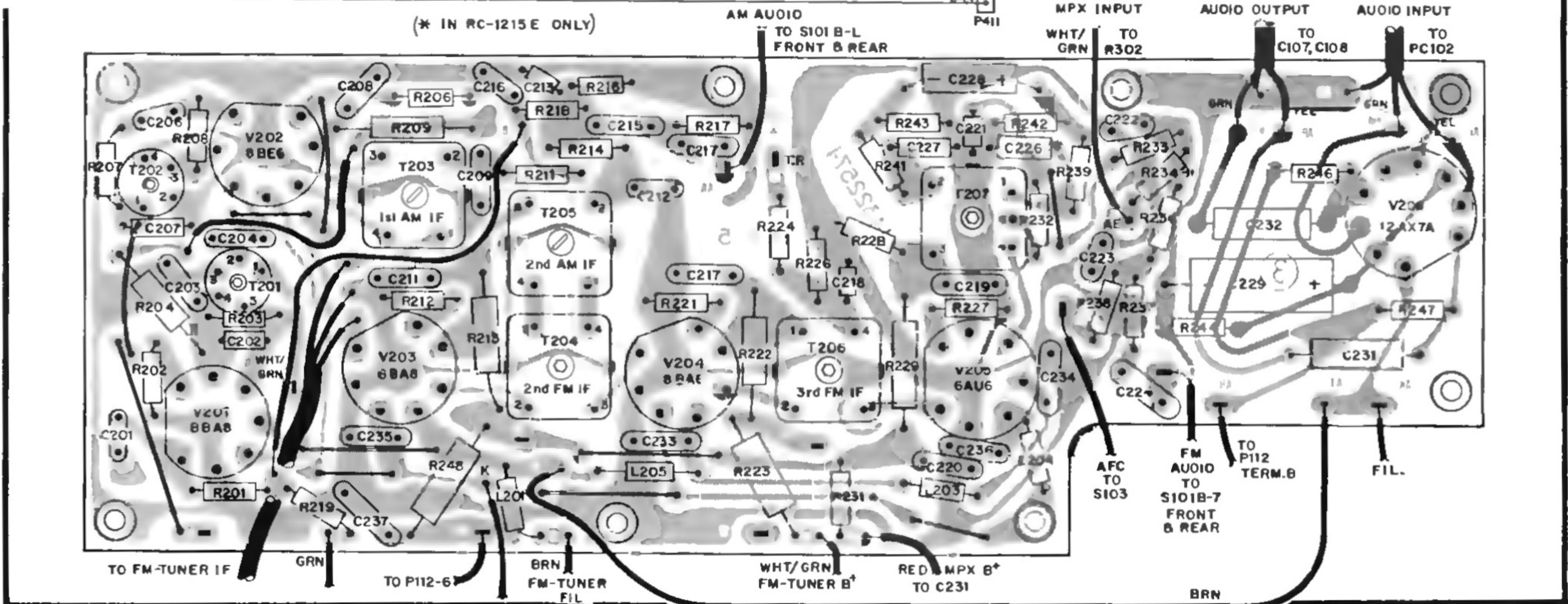
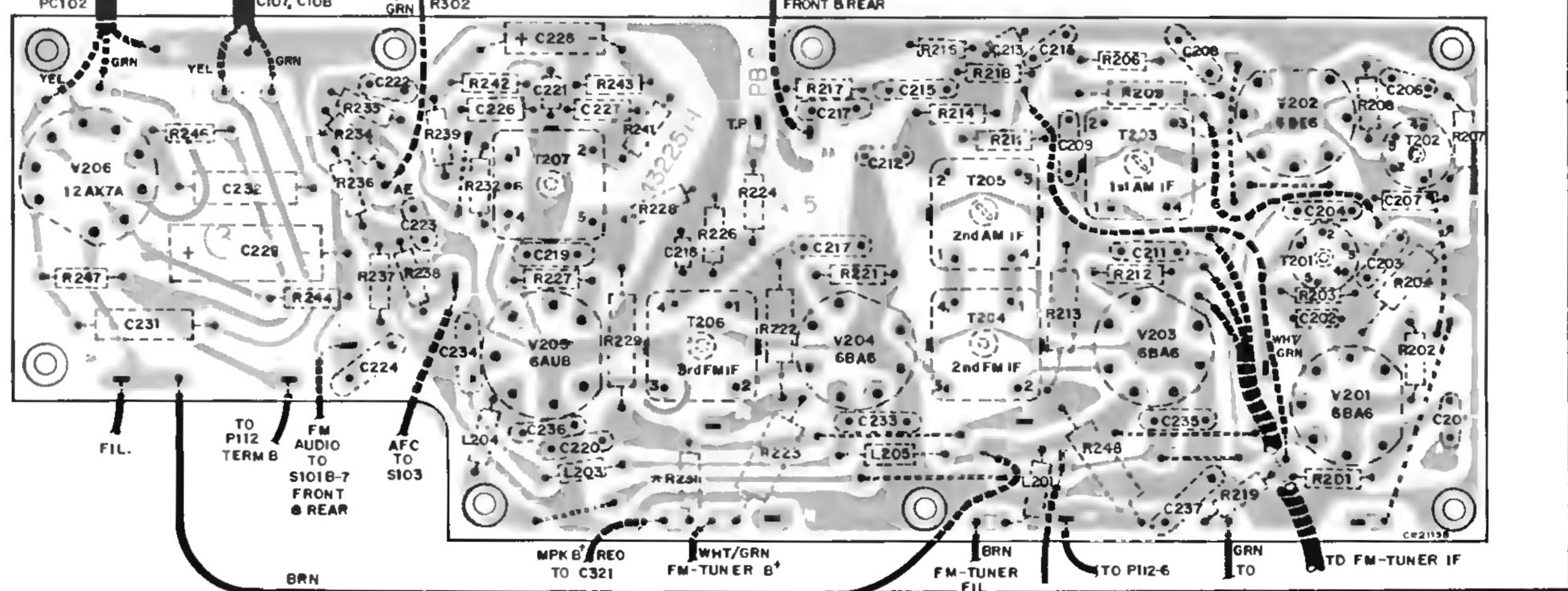


RS 212A Chassis Layout

A terminal board is available on the rear of the instrument for the attachment of accessory external speakers (RCA XFK21, 22, 23 or equivalent) should they be desired. A jack is available in the record storage compartment for use of binaral headphones (RCA XFK 11 or equivalent). A switch adjacent to the jack provides for various operating modes of the internal speakers, external speakers (if used) and the headphones.



PB200 LAYOUT



View from Wiring Side

View from Component Side

RC1215 D/E

RS203C

RC1215 D/E

LEFT CHANNEL STEREO OUTPUT
RIGHT CHANNEL STEREO OUTPUT
LEFT CHANNEL OUTPUT
RIGHT CHANNEL OUTPUT
LEFT CHANNEL TAPE OUTPUT
RIGHT CHANNEL TAPE OUTPUT

FUNCTION SELECTOR SWITCH SHOWN IN POSITION 1 & VIEWED FROM SHAFT

1. AM
2. FM
3. FM STR
4. PHONO
5. TAPE

PB200 LAYOUT

PB200 LAYOUT

RC1215 D/E

RS203C

RC1215 D/E

RS203C

RC1215 D/E

RS203C

RC1215 D/E

RS203C

RC1215 D/E

RS203C

RC1215 D/E

RS203C

RC1215 D/E

RS203C

RC1215 D/E

RS203C

RC1215 D/E

RS203C

RC1215 D/E

RS203C

RC1215 D/E

RS203C

RC1215 D/E

RS203C

RC1215 D/E

RS203C

RC1215 D/E

RS203C

RC1215 D/E

RS203C

RC1215 D/E

RS203C

RC1215 D/E

RS203C

RC1215 D/E

RS203C

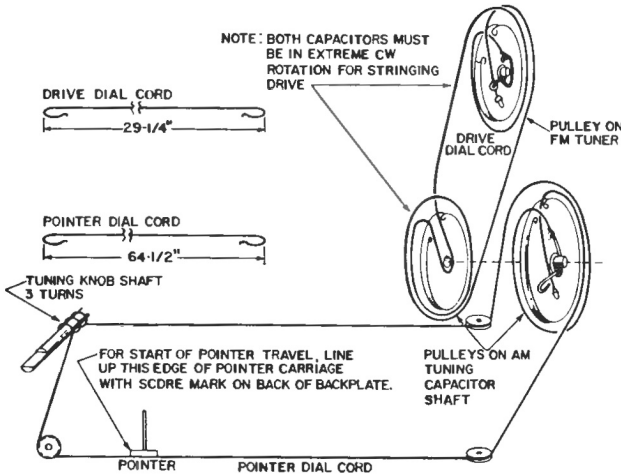
RCA VICTOR

Model Series	Tuner Chassis	Amplifier Chassis
VFR05M	RC-1215D	RS-203C
VFR05W	RC-1215D	RS-203C
VFR19M	RC-1215D	RS-203C
VFR25L	RC-1215D	RS-203C
VFT05M	RC-1215E	RS-203C
VFT05W	RC-1215E	RS-203C
VFT10E	RC-1215E	RS-203C
VFT19M	RC-1215E	RS-203C
VFT22W	RC-1215E	RS-203C
VFT25L	RC-1215E	RS-203C

Tuner Chassis RC-1215D is an AM/FM tuner (No Stereo)
 Tuner Chassis RC-1215E is an AM/FM/FM-Stereo tuner

All instruments are self-contained combination Radio/"Victrola" consoles designed to provide in-the-cabinet stereophonic reproduction. Models in the VFT 0, 1, and 2 series contain an AM/FM/FM-Stereo tuner, a stereophonic record changer, a dual channel audio amplifier, and two complete speaker systems. The VFR 0, 1, and 2 series instruments do not incorporate FM-Stereo or the stereo indicator light, but in all other respects are identical to the VFT 0, 1, and 2 series combination consoles.

Tape input jacks are provided in all instruments as well as a terminal block for the connection of external speakers. When used, external speakers are connected in parallel with the internal speaker system.



Dial Cord Arrangement

PB300 LAYOUT

